

STATISTICAL SECTION

CITY OF MISSOULA, MONTANA FUND BALANCES OF GOVERNMENTAL FUNDS Last Ten Fiscal Years (modified accrual basis of accounting)

	Fiscal Year									
	2005	2006	2007	2008	2009	2010	2011	2012	2013	2014
General Fund										
Reserved	\$ 639,060	\$ 588,145	\$ 759,606	\$ 558,624	\$ 699,325	\$ 740,667	\$ -	\$ -	\$ -	\$ -
Unreserved	1,167,446	1,341,370	1,365,053	643,449	201,062	1,348,317	-	-	-	-
Nonspendable*	-	-	-	-	-	-	1,148,767	1,232,302	1,259,186	1,129,654
Restricted*	-	-	-	-	-	-	165,282	105,804	157,822	179,972
Assigned*	-	-	-	-	-	-	1,203,481	1,284,045	1,757,237	1,716,911
Unassigned*	-	-	-	-	-	-	1,152,657	1,940,474	2,968,121	2,384,656
Total General Fund	<u>\$ 1,806,506</u>	<u>\$ 1,929,515</u>	<u>\$ 2,124,659</u>	<u>\$ 1,202,073</u>	<u>\$ 900,387</u>	<u>\$ 2,088,984</u>	<u>\$ 3,670,187</u>	<u>\$ 4,562,625</u>	<u>\$ 6,142,366</u>	<u>#####</u>
All other governmental funds										
Reserved	\$ 3,280,061	\$ 3,602,376	\$ 3,007,558	\$ 3,175,573	\$ 3,654,339	\$ 3,869,555	\$ -	\$ -	\$ -	\$ -
Unreserved, reported in:										
Special revenue funds	2,124,775	1,939,572	1,462,685	3,208,509	3,814,089	4,124,600	-	-	-	-
Debt service funds	-	-	-	-	-	-	-	-	-	-
Capital projects funds	7,181,073	(5,290,370)	521,612	(1,471,297)	(4,728,035)	(4,089,044)	-	-	-	-
Nonspendable*	-	-	-	-	-	-	11,505	12,042	-	-
Restricted*	-	-	-	-	-	-	7,911,860	7,409,318	6,789,639	6,461,485
Committed*	-	-	-	-	-	-	1,374,228	2,048,128	2,892,425	4,543,997
Unassigned*, reported in:										
Special revenue funds	-	-	-	-	-	-	(332,574)	(149,817)	(105,325)	(986,470)
Debt service funds	-	-	-	-	-	-	(36,421)	(174,575)	(23,761)	(189,696)
Capital projects funds	-	-	-	-	-	-	(3,962,631)	(4,602,847)	(5,681,029)	#####
Neighborhood stabilization funds	-	-	-	-	-	-	-	(4,139)	-	-
Total other governmental funds	<u>\$ 12,585,909</u>	<u>\$ 251,578</u>	<u>\$ 4,991,855</u>	<u>\$ 4,912,785</u>	<u>\$ 2,740,393</u>	<u>\$ 3,905,111</u>	<u>\$ 4,965,967</u>	<u>\$ 4,538,110</u>	<u>\$ 3,871,949</u>	<u>#####</u>

Source: City of Missoula

* Restated to conform to GASB Statement No. 54

STATISTICAL SECTION

CITY OF MISSOULA, MONTANA FUND BALANCES OF GOVERNMENTAL FUNDS Last Ten Fiscal Years (modified accrual basis of accounting)

	Fiscal Year									
	2005	2006	2007	2008	2009	2010	2011	2012	2013	2014
General Fund										
Reserved	\$ 639,060	\$ 588,145	\$ 759,606	\$ 558,624	\$ 699,325	\$ 740,667	\$ -	\$ -	\$ -	\$ -
Unreserved	1,167,446	1,341,370	1,365,053	643,449	201,062	1,348,317	-	-	-	-
Nonspendable*	-	-	-	-	-	-	1,148,767	1,232,302	1,259,186	1,129,654
Restricted*	-	-	-	-	-	-	165,282	105,804	157,822	179,972
Assigned*	-	-	-	-	-	-	1,203,481	1,284,045	1,757,237	1,716,911
Unassigned*	-	-	-	-	-	-	1,152,657	1,940,474	2,968,121	2,384,656
Total General Fund	<u>\$ 1,806,506</u>	<u>\$ 1,929,515</u>	<u>\$ 2,124,659</u>	<u>\$ 1,202,073</u>	<u>\$ 900,387</u>	<u>\$ 2,088,984</u>	<u>\$ 3,670,187</u>	<u>\$ 4,562,625</u>	<u>\$ 6,142,366</u>	<u>\$ 5,411,193</u>
All other governmental funds										
Reserved	\$ 3,280,061	\$ 3,602,376	\$ 3,007,558	\$ 3,175,573	\$ 3,654,339	\$ 3,869,555	\$ -	\$ -	\$ -	\$ -
Unreserved, reported in:										
Special revenue funds	2,124,775	1,939,572	1,462,685	3,208,509	3,814,089	4,124,600	-	-	-	-
Debt service funds	-	-	-	-	-	-	-	-	-	-
Capital projects funds	7,181,073	(5,290,370)	521,612	(1,471,297)	(4,728,035)	(4,089,044)	-	-	-	-
Nonspendable*	-	-	-	-	-	-	11,505	12,042	-	-
Restricted*	-	-	-	-	-	-	7,911,860	7,409,318	6,789,639	6,461,485
Committed*	-	-	-	-	-	-	1,374,228	2,048,128	2,892,425	4,543,997
Unassigned*, reported in:										
Special revenue funds	-	-	-	-	-	-	(332,574)	(149,817)	(105,325)	(986,470)
Debt service funds	-	-	-	-	-	-	(36,421)	(174,575)	(23,761)	(189,696)
Capital projects funds	-	-	-	-	-	-	(3,962,631)	(4,602,847)	(5,681,029)	(8,125,283)
Neighborhood stabilization funds	-	-	-	-	-	-	-	(4,139)	-	-
Total other governmental funds	<u>\$ 12,585,909</u>	<u>\$ 251,578</u>	<u>\$ 4,991,855</u>	<u>\$ 4,912,785</u>	<u>\$ 2,740,393</u>	<u>\$ 3,905,111</u>	<u>\$ 4,965,967</u>	<u>\$ 4,538,110</u>	<u>\$ 3,871,949</u>	<u>\$ 1,704,033</u>

Source: City of Missoula

* Restated to conform to GASB Statement No. 54

STATISTICAL SECTION

CITY OF MISSOULA, MONTANA CHANGES IN FUND BALANCES OF GOVERNMENTAL FUNDS Last Ten Fiscal Years (modified accrual basis of accounting)

	Fiscal Year									
	2005	2006	2007	2008	2009	2010	2011	2012	2013	2014
Revenues										
Taxes and assessments	\$ 19,470,666	\$ 22,340,804	\$ 24,128,385	\$ 25,071,209	\$ 26,649,687	\$ 27,445,555	\$ 28,256,587	\$ 29,396,016	\$ 31,729,767	\$ 31,161,006
Licenses and permits	3,165,413	2,839,058	2,927,474	4,054,474	2,753,704	3,050,653	3,092,436	2,866,229	3,227,926	3,119,709
Intergovernmental	14,238,028	13,208,755	13,035,698	12,747,140	13,147,938	20,456,138	17,531,499	25,130,561	17,665,516	17,000,835
Charges for services	3,298,503	3,625,225	4,540,977	3,911,813	4,439,499	4,475,126	5,160,326	5,106,399	6,057,449	5,596,577
Fines and forfeitures	1,223,864	1,178,920	1,421,588	1,215,955	1,130,177	1,203,587	1,008,945	1,344,578	1,565,130	1,347,949
Miscellaneous	309,781	949,537	975,534	1,699,515	1,168,486	1,464,092	1,205,961	613,255	625,976	544,245
Interest earnings	226,538	192,758	538,418	584,698	156,522	63,362	32,409	41,691	47,960	21,214
Total revenues	41,932,793	44,335,057	47,568,074	49,284,804	49,446,013	58,158,513	56,288,163	64,498,728	60,919,724	58,791,535
Expenditures										
General government	4,501,423	6,334,244	5,745,356	6,515,738	7,752,035	7,252,975	6,493,866	6,949,250	8,034,601	10,006,347
Public safety	16,957,739	18,138,794	19,880,732	21,637,023	21,669,039	22,227,258	22,431,087	23,834,156	25,803,943	27,886,447
Public works	5,765,617	5,803,509	6,161,928	6,670,377	6,624,812	6,577,834	7,962,836	7,437,537	7,393,392	7,381,635
Public health	1,096,344	1,152,195	1,249,223	1,364,663	1,404,043	1,368,398	1,372,380	1,431,431	1,482,096	1,550,087
Social and economic	105,238	108,395	132,897	115,000	118,450	118,450	116,000	116,000	116,000	210,000
Culture and recreation	2,719,381	3,011,054	3,676,479	3,118,438	3,278,075	3,293,005	3,289,120	3,528,049	3,838,271	4,249,717
Community development	2,129,109	2,379,741	2,202,392	2,041,498	1,193,372	4,017,676	2,264,947	10,348,859	1,238,419	227,258
Conservation of natural resources	-	-	-	-	-	7,757	450	100	120	120
Miscellaneous	910,387	-	947,093	-	-	1,041,180	1,189,351	1,003,472	1,049,647	1,057,905
Debt service - principal	2,432,981	2,783,319	6,127,301	2,973,898	3,026,661	3,121,407	3,484,312	3,689,100	3,057,702	3,695,116
Debt service - interest	1,428,517	1,357,860	1,671,508	1,665,936	1,595,937	1,584,136	1,595,391	1,556,195	2,531,043	841,703
Capital outlay	4,980,661	18,496,532	9,116,240	7,575,647	5,401,985	8,518,735	7,777,324	6,202,777	6,863,986	5,351,943
Total expenditures	43,027,397	59,565,643	56,911,149	53,678,218	52,064,409	59,128,811	57,977,065	66,096,927	61,409,220	62,458,278
Excess of revenues over (under) expenditures	(1,094,604)	(15,230,586)	(9,343,075)	(4,393,414)	(2,618,396)	(970,298)	(1,688,902)	(1,598,199)	(489,496)	(3,666,743)
Other financing sources (uses)										
Transfers in	4,833,042	5,338,325	7,003,875	4,551,456	5,343,911	5,531,051	4,989,066	7,143,975	7,539,764	7,246,955
Transfers out	(4,675,148)	(5,170,043)	(6,821,059)	(4,665,834)	(5,282,309)	(5,557,582)	(4,797,139)	(7,478,899)	(8,145,604)	(8,060,866)
Payments to Refunded Bond Escrow Agent	-	-	(2,037,769)	-	-	(983,591)	-	-	(5,541,672)	(5,781,508)
Issuance of Refunding Bonds	-	-	4,355,000	-	-	1,000,000	-	-	5,480,000	5,860,000
Premium on Refunded Bonds	-	-	-	-	-	-	-	-	152,081	-
Issuance of long term debt/capital leases	994,921	2,850,881	11,574,351	2,378,354	-	3,276,941	4,168,336	2,559,396	1,895,150	1,514,851
Proceeds from sale of capital assets	46,347	100	-	840,620	82,716	56,794	-	-	22,171	465
Total other financing sources (uses)	1,199,162	3,019,263	14,074,398	3,104,596	144,318	3,323,613	4,360,263	2,224,471	1,401,890	779,897
Net change in fund balances	\$ 104,558	\$ (12,211,323)	\$ 4,731,323	\$ (1,288,818)	\$ (2,474,078)	\$ 2,353,315	\$ 2,671,361	\$ 626,272	\$ 912,394	\$ (2,886,846)
Debt service as a percentage of non-capital expenditures:	15%	12%	23%	12%	12%	11%	12%	10%	12%	9%

Source: City of Missoula

**CITY OF MISSOULA, MONTANA
OVERLAPPING PROPERTY TAX LEVIES
Last Ten Fiscal Years**

Taxing Authority	2006	2007	2008	2009	2010	2011	2012	2013	2014	2015
City of Missoula	196.39	204.73	212.23	222.45	222.45	225.56	233.24	240.90	243.52	245.62
County of Missoula										
County Wide	129.11	133.64	136.19	140.35	138.94	139.80	142.47	145.04	150.32	160.09
County Wide Schools	102.26	104.26	104.04	105.61	104.62	103.45	100.94	100.17	104.60	105.64
Total	231.37	237.90	240.23	245.96	243.56	243.25	243.41	245.21	254.92	265.73
District Schools										
School District One	150.66	150.26	145.45	140.24	142.75	141.50	145.18	141.88	148.94	150.34
High Schools	83.40	82.21	77.05	79.13	76.46	74.63	76.44	71.92	72.19	72.77
Total	234.06	232.47	222.50	219.37	219.21	216.13	221.62	213.80	221.13	223.11
State Levies										
University	6.00	6.00	6.00	6.00	6.00	6.00	6.00	6.00	6.00	6.00
Education Foundation	40.00	40.00	40.00	40.00	40.00	40.00	40.00	40.00	40.00	40.00
Total	46.00	46.00	46.00	46.00	46.00	46.00	46.00	46.00	46.00	46.00
Urban Transportation District	12.38	13.91	14.62	14.86	16.30	16.45	17.69	19.51	21.05	34.26
Total Levy on City Residents	<u>720.20</u>	<u>735.01</u>	<u>735.58</u>	<u>748.64</u>	<u>747.52</u>	<u>747.39</u>	<u>761.96</u>	<u>765.42</u>	<u>786.62</u>	<u>814.72</u>
Overall Property Tax Increase(Decrease)	1.30%	2.06%	0.08%	1.78%	-0.15%	-0.02%	1.95%	0.45%	2.77%	3.57%
Other Levies of Interest										
County Only	31.83	34.50	35.68	35.80	35.80	36.18	36.18	36.38	36.37	36.37
Missoula Rural Fire	79.64	80.89	91.13	94.13	94.13	97.97	97.97	100.33	102.39	112.59

Source: County of Missoula Accounting Office

Note: MRA doesn't get University mills.

**CITY OF MISSOULA, MONTANA
ESTIMATED MARKET VALUE, TAXABLE VALUE AND MILL LEVY
Last Ten Fiscal Years**

Fiscal Year	Estimated Market Value	Taxable Value City Without Tax Increment	Ratio of Total Assessed Value to Total Estimated Market Value	Taxable Value Tax Increment Districts	Mill Levy
2006	\$ 2,805,424,077	\$ 91,358,406	3.26%	\$ 3,844,866	196.39
2007	2,901,638,641	93,533,579	3.22%	1,446,959	204.73
2008	3,195,587,513	99,332,558	3.11%	1,806,159	212.23
2009	3,369,424,088	103,000,436	3.06%	1,909,938	222.45
2010	3,757,969,949	104,408,018	2.78%	4,507,159	222.45
2011	3,965,146,053	106,229,033	2.68%	5,245,004	225.56
2012	4,140,685,284	107,878,992	2.61%	5,114,782	233.24
2013	4,110,699,383	108,167,019	2.63%	4,530,936	240.90
2014	4,305,020,382	109,336,360	2.54%	4,732,437	243.52
2015	4,406,017,003	108,677,495	2.47%	3,946,539	245.62

Source: Missoula County Assessors Office

CITY OF MISSOULA, MONTANA
ASSESSED VALUE AND ESTIMATED TAXABLE VALUE OF PROPERTY
Last Ten Fiscal Years
(in thousands of dollars)

Fiscal Year	Real Property	Equipment & Fixtures	Electric, Airline & Telecommunications	Railroad	Electric, Phone Co-ops & Pollution Control	Other	Tax Increment District	Total Taxable Assessed Value
2006	\$ 81,061	\$ 4,529	\$ 4,999	\$ 363	\$ 380	\$ 27	\$ (3,845)	\$ 87,514
2007	84,231	4,697	5,291	346	379	61	(1,471)	93,534
2008	91,045	4,474	7,475	313	382	-	(1,806)	101,883
2009 ^	-	-	-	-	-	-	-	-
2010	96,352	5,133	3,585	348	380	3,117	(4,507)	104,408
2011	96,914	4,785	5,304	397	393	3,681	(5,245)	106,229
2012	98,235	4,851	5,376	402	398	3,732	(5,115)	107,879
2013	98,669	3,852	5,175	440	407	4,154	(4,531)	108,167
2014	99,741	4,086	4,928	587	346	4,350	(4,732)	109,305
2015	101,034	2,242	3,848	501	396	4,604	(3,947)	108,677

*Property in the City does have a Market Value is assessed at actual value at a rate of 2.5%; therefore, the assessed values are equal to actual value.

*This table presents taxable property assessments at values calculated after certified values were received from the Department of Revenue. These values will not articulate to certified values due to the date that this report is run by the Department of Revenue.

^ 2009 Values are no longer available due to Department of Revenue (DOR) software constraints and timing issues in FY2009.

Source: Missoula County Assessor's Office and Department of Revenue.

**CITY OF MISSOULA, MONTANA
PROPERTY VALUE AND NEW CONSTRUCTION
Last Ten Fiscal Years**

Fiscal Year	Assessed Value City Property	New Construction						% Change Over Last Year
		Single Family		Multi-Family		All Construction		
		Number	Value Estimate	Number	Value Estimate	Number	Value Estimate	
2005	\$ 2,636,857,585	457	\$ 38,970,878	194	\$ 8,157,757	1,677	\$ 113,217,490	2.96%
2006	2,805,424,077	374	35,521,132	79	4,393,527	1,494	99,855,627	-11.80%
2007	2,901,638,641	303	31,466,438	153	7,595,391	1,613	89,139,379	-10.73%
2008	3,195,587,513	229	21,554,764	154	9,711,099	1,530	133,165,009	49.39%
2009	3,369,424,088	142	11,627,586	73	3,019,865	1,291	63,987,567	-51.95%
2010	3,757,969,949	139	12,643,362	63	2,552,415	1,306	54,867,213	-14.25%
2011	3,965,146,053	95	8,892,276	262	17,010,385	1,283	87,790,572	60.01%
2012	4,140,685,284	96	9,675,751	329	15,186,996	1,395	58,443,007	-33.43%
2013	4,110,699,383	127	11,284,179	371	14,682,857	1,485	68,558,394	17.31%
2014	4,305,020,382	160	18,828,163	210	9,575,271	1,319	74,177,588	8.20%

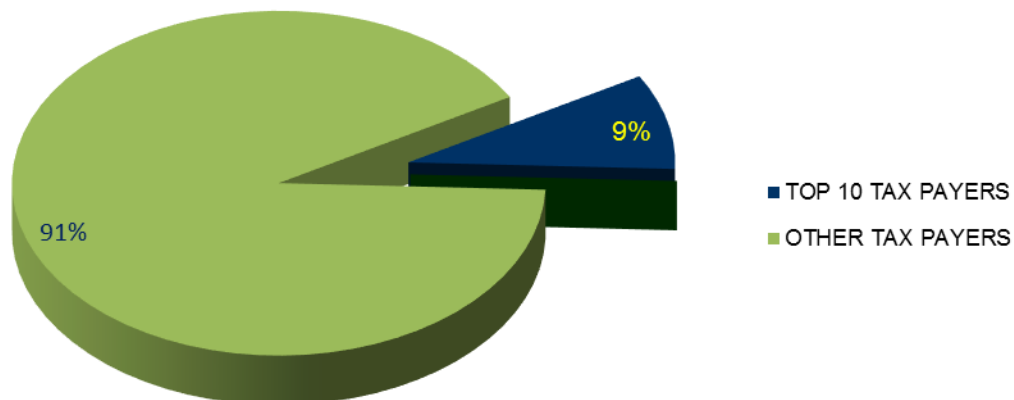
Source: City of Missoula Building Inspection Office and Missoula County Assessor

**CITY OF MISSOULA
FOR FY 2014 - FY 2015**

Rank	Taxpayer	Taxable Value
1	NORTHWESTERN CORPORATION	\$ 3,622,326
2	CENTRYLINK	1,164,891
3	MOUNTAIN WATER COMPANY	999,428
4	BRESNAN COMMUNICATION	753,201
5	SOUTHGATE MALL	723,081
6	MONTANA RAIL LINK	633,236
7	GATEWAY LIMITED PARTNERSHIP	583,026
8	VERIZON WIRELESS	520,727
9	ST PATRICK HOSPITAL	464,238
10	MOUNTAIN STATES LEASING	313,476

\$ 9,777,630

**Top 10 Taxpayers as compared to
remaining taxpayers**



**CITY OF MISSOULA, MONTANA
PROPERTY TAX LEVIES AND COLLECTIONS
GOVERNMENTAL FUND TYPES
Last Ten Fiscal Years**

Fiscal Year Ended June 30th	Total Tax Levy for Fiscal Year	Collected within the Fiscal Year of the Levy		Collections in Subsequent Years	Total Collections to Date*		Percentage of Delinquencies
		Amount	Percentage of Levy		Amount	Percentage of Levy	
2005	\$ 15,977,347	\$ 15,900,407	99.52%	\$ 208,969	\$ 16,109,376	100.83%	0.48%
2006	18,369,060	17,935,902	97.64%	366,878	18,302,780	99.64%	2.36%
2007	19,863,202	19,806,028	99.71%	220,890	20,026,918	100.82%	0.29%
2008	21,454,436	20,926,264	97.54%	56,389	20,982,653	97.80%	2.46%
2009	22,914,220	22,301,910	97.33%	317,891	22,619,800	98.72%	2.67%
2010	23,225,564	22,737,517	97.90%	636,697	23,374,213	100.64%	2.10%
2011	23,961,021	22,743,766	94.92%	862,661	23,606,427	98.52%	5.08%
2012	25,161,696	24,607,176	97.80%	211,507	24,818,683	98.64%	2.20%
2013	26,057,435	26,150,721	100.36%	850,849	27,001,570	103.62%	-0.36%
2014	26,625,590	25,882,072	97.21%	140,631	26,022,703	97.74%	2.79%

Source: City of Missoula

* Delinquent tax collections include amounts collected from penalties, interest, and other delinquent collections. The City does not identify delinquent collections by the year for which the tax was levied.

In 2014 this table was updated to reflect all taxes levied by the City of Missoula, not just the General Fund.

While 2014 delinquencies are within a normal range we feel it germane to the reader to mention the passage of SB96 which reduced 2014 tax receipts for strict personal property. The legislature attempted to make taxing jurisdictions whole by one-time payments. The City of Missoula received a one-time payment of \$327,628 which is reflected in Intergovernmental revenues rather than tax receipts.

**CITY OF MISSOULA, MONTANA
GENERAL OBLIGATION DEBT RATIOS
REQUIRED CONTINUING DISCLOSURE**

The following general obligation debt ratios are provided as of June 30, 2014

Market Valuation	\$	4,305,020,382
Market Valuation (Less Tax Increment)	\$	4,300,287,945
Taxable Valuation	\$	112,899,456
Taxable Valuation (Less Tax Increment)	\$	109,336,360
Population		68,159
Direct Debt Per Capita	\$	162
Direct and Overlapping Debt Per Capita	\$	357
Direct Debt to Market Valuation		0.26%
Direct and Overlapping Debt to Market Valuation		0.57%
Direct Debt to Taxable Valuation		9.76%
Direct and Overlapping Debt to Taxable Valuation		21.55%
Market Valuation per Capita	\$	63,161
Taxable Valuation per Capita	\$	1,604

Source: City of Missoula

**SUMMARY OF DIRECT DEBT, INDIRECT DEBT AND DEBT RATIOS
REQUIRED CONTINUING DISCLOSURE
AS OF JUNE 30, 2014**

	Summary of Direct Debt		
	Gross Debt	Less: Debt Service Funds (a)	Net Direct Debt
General Obligation Debt Supported by Taxes	\$ 11,020,000	\$ -	\$ 11,020,000
Debt Supported by General Fund	8,311,192	-	8,311,192
Revenue Debt (Sewer)	23,052,215	(b)	23,052,215
Revenue Debt (TIF and Parking)	25,355,722	(c)	25,355,722
Subtotal of Direct Debt	<u>\$ 67,739,129</u>		<u>\$ 67,739,129</u>

(a) Debt Service funds are as of June 30th. Includes money to pay both principal and interest.

(b) Monies are transferred from the Sewer Enterprise Fund to make the principal and interest payments on these bonds.

(c) Monies from the Missoula Parking Commission and tax increment revenues are used to make principal and interest payments on these bonds.

	Summary of Indirect Debt		
	G.O. Debt as of June 30, 2014	Debt Applicable to Tax Capacity of City	
		Percentage^	Amount
Taxing Unit:			
Missoula County High School District	\$ 8,520,000	57.60%	\$ 4,907,520
Hellgate Elementary School District	10,385,000	15.68%	1,627,923
School District No. 20 (Desmet)	170,000	0.50%	850
Missoula County	12,705,802	53.30%	6,772,192
Subtotal of Indirect Debt	<u>\$ 31,780,802</u>		<u>\$ 13,308,486</u>

Total of Direct and Indirect Debt \$ 81,047,615

	Debt Ratios*	
	G.O. Net Direct Debt	G.O. Indirect & Net Direct Debt
Current Year Estimated Value	0.26%	0.57%
Per Capita	\$ 162	\$ 357

*Includes general obligation debt and debt supported by general fund revenues, excludes revenue supported debt.

^The percentage of overlapping debt applicable is estimated using taxable assessed property values. Applicable percentages were estimated by determining the portion of the county's taxable assessed value that is within the government's boundaries and dividing it by the county's total taxable assessed value.

Source: City of Missoula

Source: Missoula County Assessors Office

Source: Local Schools

**CITY OF MISSOULA, MONTANA
LEGAL DEBT MARGIN INFORMATION
Last Ten Fiscal Years
(amounts expressed in thousands)**

	Fiscal Year									
	2005	2006	2007	2008	2009	2010	2011	2012	2013	2014
Debt Limit	\$ 43,815	\$ 48,253	\$ 84,236	\$ 85,308	\$ 93,949	\$ 93,949	\$ 99,129	\$ 103,517	\$ 102,767	\$ 107,626
Total net debt applicable to limit	<u>14,511</u>	<u>18,972</u>	<u>17,944</u>	<u>16,426</u>	<u>16,426</u>	<u>15,224</u>	<u>13,966</u>	<u>12,661</u>	<u>11,520</u>	<u>11,038</u>
Legal debt Margin	<u>\$ 29,304</u>	<u>\$ 29,281</u>	<u>\$ 66,292</u>	<u>\$ 68,882</u>	<u>\$ 77,523</u>	<u>\$ 78,725</u>	<u>\$ 85,163</u>	<u>\$ 90,856</u>	<u>\$ 91,247</u>	<u>\$ 96,588</u>
Total net debt applicable to the limit as a percentage of debt limit	<u>33.12%</u>	<u>39.32%</u>	<u>21.30%</u>	<u>19.26%</u>	<u>17.48%</u>	<u>16.20%</u>	<u>14.09%</u>	<u>12.23%</u>	<u>11.21%</u>	<u>10.26%</u>

Legal Debt Margin Calculation for Fiscal Year 2014

Assessed Value of Taxable Property as Ascertained by the last Assessment for Taxes	4,305,020
Debt Limit 2.5% of Assessed Value (1)	<u>2.50%</u>
General Obligation Debt Limit	107,626
Less: Outstanding General Obligation Debt, June 30, 2013	<u>11,038</u>
Total net debt applicable to limit	<u>96,588</u>
Legal Debt Margin	<u>96,588</u>

(1) Montana Statute (7-7-4201) prescribes a legal debt limit of 2.5% of the total assessed value of taxable property, which was increased in the FY 2007 legislature from 1.51%.

Source: City of Missoula
Source: Missoula County Assessors Office

STATISTICAL SECTION

CITY OF MISSOULA, MONTANA RATIO OF OUTSTANDING DEBT BY TYPE Last Ten Fiscal Years

Fiscal Year	Governmental Activities						Business-Type Activities			Total Primary Government	Total Personal		Debt as a Percentage of Personal Income	Debt Per Capita	Debt as a Percentage of Market Value
	General Obligation Bonds	Limited Obligation Bonds	Special Assessment Bonds	Loans Payable	Capital Leases	Sidewalk & Curb Warrants	Revenue Bonds	Capital Leases	Notes Payable		Per capita Income*	Total Population			
2005	\$ 15,020,000	\$ 1,380,000	\$ 14,226,402	\$ 546,373	\$ -	\$ 228,628	\$16,586,138	\$ -	\$ -	\$47,987,541	\$ 31,397	63,396	2.41%	\$ 757	1.71%
2006	14,070,000	1,315,000	15,594,203	440,972	-	120,923	17,079,212	-	-	48,620,310	33,247	64,081	2.28%	759	1.68%
2007	18,720,000	4,760,000	15,455,681	252,453	-	120,923	16,797,231	-	-	56,106,288	34,451	65,826	2.47%	852	1.76%
2008	17,500,000	5,360,000	15,510,165	222,425	-	120,923	15,818,231	-	-	54,531,744	35,294	66,000	2.34%	826	1.62%
2009	16,235,000	5,130,000	14,030,295	191,309	-	100,248	14,801,231	-	-	50,488,083	35,156	66,295	2.17%	762	1.34%
2010	15,065,000	4,935,000	14,350,241	159,063	1,378,125	-	13,883,485	-	-	49,770,914	35,592	66,500	2.10%	748	1.32%
2011	13,840,000	5,625,000	15,021,055	125,646	1,959,752	-	24,579,098	71,250	-	61,221,801	36,032	66,788	2.54%	917	1.63%
2012	12,570,000	5,285,000	15,322,685	91,014	2,174,849	-	23,600,000	385,660	2,525,270	61,954,479	36,479	67,242	2.53%	921	1.50%
2013	11,465,000	4,935,000	14,189,516	55,126	2,819,606	-	22,051,000	337,080	2,236,246	58,088,574	36,931	67,699	2.32%	858	1.41%
2014	11,020,000	4,575,000	12,738,346	17,932	3,718,260	-	20,857,000	232,296	1,962,919	55,121,753	37,388	68,159	2.16%	809	1.28%

Source: City of Missoula

Source: Missoula County Assessors Office

Source: Montana Department of Labor - Research and Analysis Bureau

*2010 is the most recent data available. Preceding years to 2004-2009 are City estimates.

CITY OF MISSOULA, MONTANA
RATIO OF ANNUAL DEBT SERVICE REQUIREMENTS FOR
Last Ten Fiscal Years
Amounts expressed in thousands, except population and per capita

Fiscal Year	General Obligation Bonds*	Total Taxable Assessed Valuation	Percentage of Taxable Value of Property	Estimated Population	Per Capita
2005	\$ 15,020	\$ 84,586	18%	63,396	\$ 236.92
2006	14,070	91,358	15%	64,081	219.57
2007	18,720	93,534	20%	65,826	284.39
2008	17,500	99,333	18%	66,000	265.15
2009	16,235	103,000	16%	66,295	244.89
2010	15,065	104,408	14%	66,500	226.54
2011	13,840	106,229	13%	66,788	207.22
2012	12,570	107,879	12%	67,242	186.94
2013	11,465	108,167	11%	67,699	169.35
2014	11,020	109,336	10%	68,159	161.68

* Presented as net bonded debt (net bonded debt is balance of outstanding debt less restricted funds collected for debt payment). First year presented is FY2012. All other fiscal years is presented as total bonded debt.

Source Restricted Debt: Combining Balance Sheet - Nonmajor Debt Service Funds

Source: City of Missoula

Source: Missoula County Assessors Office

Source: Bureau of Economic Analysis

**CITY OF MISSOULA, MONTANA
PLEDGED-REVENUE COVERAGE
WASTEWATER FACILITY REVENUE BONDS
Last Ten Fiscal Years**

Fiscal Year	Operating Revenues	Operating Expenses (1)	Net Revenue Available for Debt	Principal Paid	Debt Service Requirements		
					Interest Paid	Total Debt Service	Coverage (2)
2005	\$ 7,265,854	\$ 3,151,625	\$ 4,114,229	\$ 797,233	\$ 655,716	\$ 1,452,949	283%
2006	6,620,032	3,263,652	3,356,380	894,751	660,341	1,555,092	216%
2007	6,778,103	3,492,891	3,285,211	941,000	682,728	1,623,728	202%
2008	6,848,299	3,900,755	2,947,544	979,000	641,677	1,620,677	182%
2009	6,543,754	3,860,411	2,683,343	1,017,000	605,558	1,622,558	165%
2010	6,705,911	3,769,644	2,936,267	1,050,023	568,464	1,618,487	181%
2011 ^	6,678,968	3,876,659	2,802,309	1,511,485	721,218	2,232,703	126%
2012	7,375,912	4,701,243	2,674,669	979,098	876,018	1,855,116	144%
2013	7,861,126	4,925,194	2,935,932	1,186,000	711,146	1,897,146	155%
2014	8,023,882	4,837,498	3,186,384	1,194,000	616,515	1,810,515	176%

^ Debt Service Coverage Calculation - 2014	
	FY 2014
Revenues	
Operating Revenue	\$ 8,261,704
Less: Federal Credit	(237,822)
Total Operating Revenue	8,023,882
Expenses	
Operating Expenses	(7,558,727)
Add back Depreciation	2,721,229
Total Operating Expenses	(4,837,498)
Revenues Available for Debt Service:	\$ 3,186,384
Debt Service	
Principal	\$ 1,194,000
Interest	854,337
Less: Federal Credit	(237,822)
Net Debt Service	\$ 1,810,515
Coverage	176%

Source: City of Missoula Annual Financial Reports

(1) Does not include depreciation or bond interest.

(2) Net revenues divided by the maximum debt payment due in any future calendar year.

**CITY OF MISSOULA, MONTANA
REVOLVING FUND YEAR-END BALANCES
REQUIRED CONTINUING DISCLOSURE
Last Ten Fiscal Years**

Fiscal Year	Revolving Fund Cash Balance	Principal Amount of Bonds	Percentage
2005	\$ 808,460	\$ 14,226,402	5.7%
2006	889,718	15,594,203	5.7%
2007	954,148	15,455,681	6.2%
2008	779,966	15,510,165	5.0%
2009	719,399	14,030,295	5.1%
2010	746,320	14,250,241	5.2%
2011	794,547	15,021,055	5.3%
2012	774,812	15,322,685	5.1%
2013	719,735	14,189,516	5.1%
2014	636,917	12,738,346	5.0%

Source: City of Missoula

**CITY OF MISSOULA, MONTANA
REVOLVING FUND CHANGES IN FUND BALANCE
REQUIRED CONTINUING DISCLOSURE
Last Ten Years**

	Fiscal Year									
	2005	2006	2007	2008	2009	2010	2011	2012	2013	2014
Beginning Balance	\$ 955,785	\$ 808,460	\$ 889,718	\$954,148	\$779,966	\$719,399	\$764,101	\$794,547	\$ 791,209	\$ 735,266
Disbursements/Transfers	(147,325)	81,258	64,430	(174,182)	(60,567)	44,702	30,446	(3,338)	(55,943)	(82,817)
Ending Balance	<u>\$ 808,460</u>	<u>\$ 889,718</u>	<u>\$ 954,148</u>	<u>\$779,966</u>	<u>\$719,399</u>	<u>\$764,101</u>	<u>\$794,547</u>	<u>\$791,209</u>	<u>\$ 735,266</u>	<u>\$ 652,449</u>
Assets:										
Cash	\$ 808,460	\$ 885,738	\$ 928,632	\$776,343	\$702,257	\$746,320	\$793,639	\$774,812	\$ 719,735	\$ 636,917
Due from SID Funds	-	-	-	-	-	-	-	865	-	-
Other Receivables	227,828	218,910	222,281	184,856	182,844	167,952	135,548	134,640	119,108	103,577
Total Assets	<u>1,036,288</u>	<u>1,104,648</u>	<u>1,150,913</u>	<u>961,200</u>	<u>885,101</u>	<u>914,272</u>	<u>929,187</u>	<u>910,317</u>	<u>838,843</u>	<u>740,494</u>
Liabilities:										
Deferred Revenue	227,828	214,930	196,765	181,233	165,702	150,171	134,639	119,108	103,577	88,046
Total Liabilities	<u>227,828</u>	<u>214,930</u>	<u>196,765</u>	<u>181,233</u>	<u>165,702</u>	<u>150,171</u>	<u>134,639</u>	<u>119,108</u>	<u>103,577</u>	<u>88,046</u>
Total Fund Balance	<u>\$ 808,460</u>	<u>\$ 889,718</u>	<u>\$ 954,148</u>	<u>\$779,966</u>	<u>\$719,399</u>	<u>\$764,101</u>	<u>\$794,547</u>	<u>\$791,209</u>	<u>\$ 735,266</u>	<u>\$ 652,449</u>

Source: City of Missoula

**CITY OF MISSOULA, MONTANA
DEMOGRAPHIC AND ECONOMIC STATISTICS
Last Ten Fiscal Years**

Fiscal Year	Population		Income Statistics		State	Missoula County
	Estimated City Population (1)	County Population	Total Personal Income (2)	Per Capita Income (2)	Unemployment Rate	Unemployment Rate
2005	63,396	102,118	\$ 3,204,473	\$ 31,397	4.0%	3.7%
2006	64,081	104,145	3,460,865	33,247	3.5%	3.3%
2007	65,826	105,911	3,646,623	34,451	2.5%	2.3%
2008	66,000	107,565	3,795,962	35,294	4.1%	4.1%
2009	66,295	108,000	3,818,772	35,156	5.3%	5.1%
2010	66,500	108,500	3,866,079	35,592	6.6%	6.3%
2011	66,788	109,299 *	3,913,971 *	36,032 *	6.9%	6.8%
2012	67,242	110,042 *	3,962,457 *	36,479 *	6.5%	6.4%
2013	67,699	110,791 *	4,011,544 *	36,931 *	5.5%	5.7%
2014	68,159	111,544 *	4,061,238 *	37,388 *	4.6%	4.9%

(1) 2000 and 2010 population is from the US Census Bureau. All other years are estimated.

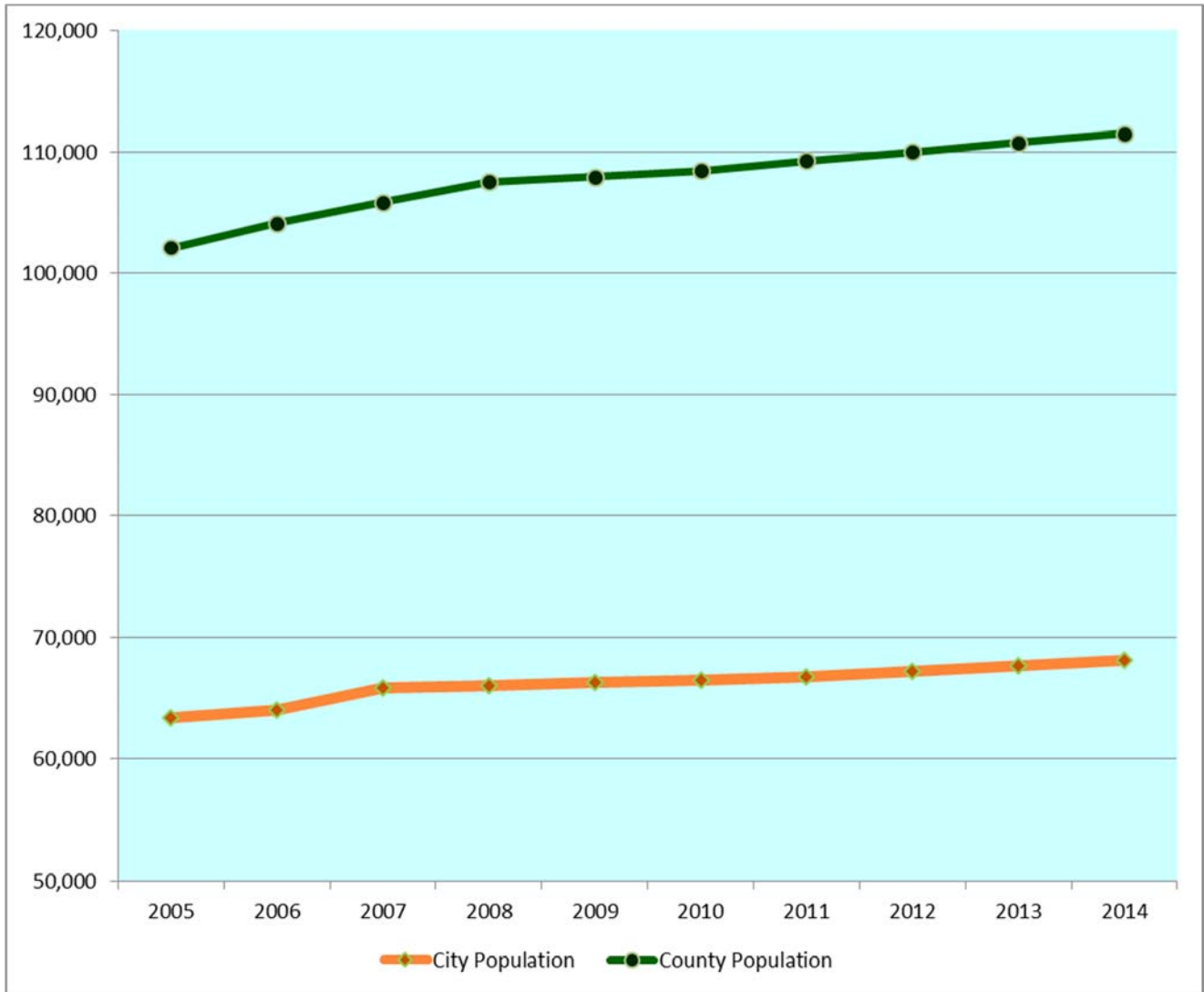
(2) Only Missoula County information available.

* Estimate based on average increase of prior years.

Source - Bureau of Economic Analysis and Department of Labor & Industry, Research & Analysis Bureau

N/A - Not available

County and City of Missoula Population per year



County and City of Missoula Percent increase in population per year



STATISTICAL SECTION

City of Missoula Climate Demographics Last 30 years

Temperature	Missoula (1893-2003)	Kalispell (1899-2003)	Butte (1894-2003)	State of Montana	State of Idaho
Latest 30 Year Normal Temperature (1971-2000)	44.8	42.6	39.5	-	-
Average Temperature (Jan-Dec)	44.3	43.1	39.9	-	-
Lowest Temperature	-33 (1/26/57)	-38 (1/30/50 - 1/31/50)	-52 (2/9/33)	-70 Rogers Pass (1/20/54)	-60 Island Park Dam (1/18/43)
Highest Temperature	107 (7/6/2007)	105 (8/4/61)	100 (7/22/31)	117 Medicine Lake (7/5/37)	118 Orofino (7/28/34)

Precipitation	Missoula (1893-2003)	Kalispell (1899-2003)	Butte (1894-2003)	State of Montana	State of Idaho
Latest 30 Year Normal Precipitation (1971-2000)	13.84	17.21	12.78	-	-
Average Precipitation (Jan-Dec)	13.65	16.22	12.97	-	-
Driest Month	Trace August 1967	Trace August 1955	Trace October 1987	-	-
Driest Year	8.16 1931	10.42 1944	6.89 1935	-	-
Greatest 24-hour Precipitation	2.32 inches (11/5/1927)	2.71 inches (6/29/1982)	3.00 inches (06/09/1913)	-	-
Wettest Month	7.38 inches May 1980	6.02 inches July 1983	8.86 inches June 1913	-	-
Wettest Year	21.92 inches 1998	25.23 inches 1996	20.55 inches 1909	-	-
Annual Average Snowfall	44 inches	58.3 inches	61.3 inches	-	-
Greatest 24-hour Snow	27.5 inches (11/30/1893)	20.1 inches (12/27/1911)	30.0 inches (10/10/1911)	-	-
Greatest Monthly Snow	54.1 inches December 1996	55.9 inches December 1936	32.5 inches October 1911	-	-
Greatest Annual Snowfall	106.1 inches 1996	148.8 inches 1996	125.5 inches 1996	-	-
Greatest Snow Depth	27.0 inches (12/29/1996)	61.0 inches (12/30/1996)	27.0 inches (12/29/1996)	-	-

Source: National Weather Service Forecast Office, Missoula, MT

**CITY OF MISSOULA, MONTANA
TOP EMPLOYERS IN CITY OF MISSOULA
Current and Ten Years Ago**

Employer	Type of Product or Service	2014	Percentage of Total City Employment	2005	Percentage of Total City Employment
University of Montana	Higher Education	3,071	4.51%	2188	3.45%
St. Patrick Hospital	Healthcare	1,722	2.53%	1450	2.29%
Missoula County Public Schools	Public Education	1,155	1.69%	1239	1.95%
Community Medical Center	Healthcare	958	1.41%	1183	1.87%
DirecTV Customer Service	Service	820	1.20%	*	*
Missoula County	County Government	723	1.06%	667	1.05%
Us Forrest Service	Federal Government	590	0.87%	*	*
Wal-Mart	Retail	585	0.86%	*	*
Opportunity Resources	Service	547	0.80%	*	*
City of Missoula	City Government	540	0.79%	534	0.84%
Western Montana Clinic	Healthcare			319	0.50%
Smurfit-Stone Container Company	Wood Products			507	0.80%
Stimpson Lumber Company	Wood Products			300	0.47%
Montana Rail Link	Rail Transportation			1000	1.58%

* Employers were added after 2005

Source - Bureau of Economic Analysis and Department of Labor & Industry, Research & Analysis Bureau

**CITY OF MISSOULA, MONTANA
CITY SERVICES AND EMPLOYMENT**

Bargaining Unit	Number of Members	Date of Expired Contract
International Association of Firefighters, Local No. 271	86	June 30, 2015
Missoula Police Protective Association	94	June 30, 2015
Montana Public Employees Association		
Maintenance Technicians in Parks and Recreation Dept	9	June 30, 2015
Wastewater Lab Techs	2	June 30, 2015
Parking Commission	7	June 30, 2015
Teamsters Union, Local No. 2	20	June 30, 2015
Operators' Union, Local No. 4000	10	June 30, 2015
Machinists Union, Local No. 88, District No. 86	8	June 30, 2015
Teamsters, Parks and Recreation Seasonal	18	June 30, 2015
Wastewater Operator's Union, Local 400	14	June 30, 2015
International Brotherhood of Electrical Workers	2	June 30, 2015
International Brotherhood of Electrical Workers (Building)	5	June 30, 2015

Note: Basic Services provided through City government include Police and Fire protection, Municipal Sewer and Sanitation, street Maintenance and Construction, Building Inspection, Zoning Enforcement, Public Works, and Parks and Recreation. As of June 30, 2008, the City employed approximately 639 workers, including Seasonal and Intermittent. Of the total City workforce, approximately 40% were members of organized bargaining units. State law requires Montana Cities to bargain collectively with formally recognized bargaining units. The City considers relations with its bargaining groups to be satisfactory.

Source: City of Missoula

**MISSOULA, MONTANA METROPOLITAN AREA
EMPLOYMENT BY MAJOR INDUSTRY TYPE
ANNUAL AVERAGE
Last Ten Fiscal Years**

	<u>2005</u>	<u>2006</u>	<u>2007</u>	<u>2008</u>	<u>2009</u>	<u>2010</u>	<u>2011</u>	<u>2012</u>	<u>2013</u>	<u>2014 (A)</u>
Goods Producing	6,200	6,200	6,200	6,100	5,500	4,600	4,700	4,400	4,500	4,200
Trade, Transportation and Utilities	12,600	12,800	12,900	12,900	12,100	11,300	11,400	11,600	11,100	12,100
Professional and Business Service	5,000	5,200	5,900	6,200	6,100	6,900	6,900	6,800	7,000	7,100
Educational and Health Services	8,200	8,300	8,300	8,700	8,900	9,200	9,500	9,800	10,000	10,200
Healthcare and Social Assistance	7,800	7,900	7,900	8,200	8,400	8,700	9,000	9,200	9,300	9,500
Leisure and Hospitality	6,900	7,100	7,600	7,900	7,600	7,000	6,900	7,400	7,300	8,600
Government	10,200	10,600	10,400	9,300	8,300	10,300	8,400	10,300	10,500	10,200
	<u>56,900</u>	<u>58,100</u>	<u>59,200</u>	<u>59,300</u>	<u>56,900</u>	<u>58,000</u>	<u>56,800</u>	<u>59,500</u>	<u>59,700</u>	<u>61,900</u>

Source: Department of Labor & Industry, Research & Analysis Bureau

(A) Most recent data available through September 2014.
All other years are annual data

STATISTICAL SECTION

CITY OF MISSOULA, MONTANA OPERATING INDICATORS BY FUNCTION/PROGRAM Last Ten Fiscal Years

Function/Program	2005	2006	2007	2008	2009	2010	2011	2012	2013	2014
General Government										
Business Licenses Issued	4,484	5,173	5,290	6,386	5,141	5,947	5,103	5,872	5,585	5,418
Amount of SID's Billed	\$ 2,241,307	\$ 2,748,200	\$ 2,793,604	\$ 2,802,979	\$ 2,759,874	\$ 2,788,949	\$ 2,979,149	\$ 2,806,770	\$ 2,565,463	\$ 2,468,350
# Sewer Bills	36,641	38,728	41,002	41,818	42,323	42,860	43,493	44,495	45,042	45,042
Public Safety Activities										
Citations issued	31,008	33,262	38,468	32,219	31,700	25,136	20,232	20,554	18,139	15,420
Orders of Protection issued	586	604	417	400	398	277	209	236	203	318
Attorney's Office - Lawsuits & Claims	53	51	47	49	41	26	24	22	32	29
Attorney - Opened criminal files	2,179	4,235	3,181	2,708	2,372	2,313	3,029	4,007	4,255	3,955
Officers/1,000 population	2	2	2	2	2	2	1	2	2	2
Total sworn officers	96	100	102	101	101	100	100	104	106	109
Police calls for Service	37,494	43,778	40,515	40,981	41,424	41,373	40,272	41,334	42,302	41,728
Total Fire Department Incident Responses*	4,701	5,259	5,497	5,805	5,850	6,217	5,752	6,131	6,548	6,745
Public Works										
Miles of sidewalk installed	24.74	9.34	9.19	7.00	4.00	6.78	5.42	4.72	5.58	9.19
Building Permits Issued	1,494	1,613	1,613	1,530	1,291	1,306	1,283	1,395	1,485	1,319
Construction Value of Bldg permits issued	\$ 99,855,627	\$ 89,139,379	\$ 89,139,379	\$ 133,165,009	\$ 63,987,567	\$ 54,867,213	\$ 87,790,572	\$ 58,443,007	\$ 68,558,394	\$ 74,177,588
Miles of Street - per State Gas Tax Report	359	359	338	312	383	391	413	416	419	422
Population	63,396	64,081	65,826	66,000	66,295	66,500	66,788	67,242	67,699	68,159

Source: City of Missoula

* Fire Department Incident Responses are based on Calendar Years. Current Year number through 12/31/13.

STATISTICAL SECTION

CITY OF MISSOULA, MONTANA CAPITAL ASSET STATISTICS BY FUNCTION/PROGRAM Last Eight Fiscal Years

Function	Fiscal Year							
	2007	2008	2009	2010	2011	2012	2013	2014
GENERAL GOVERNMENT								
Vehicles	5	7	4	4	4	2	2	2
Buildings	2	3	3	3	3	4	4	5
PUBLIC SAFETY ACTIVITIES								
Fire Stations	5	5	5	5	5	5	5	5
Fire Engines/Trucks/Vehicles/Vans	27	26	26	25	25	31	32	32
Police Motorcycles	6	6	6	6	6	4	5	5
Police Patrol Cars/Passenger Vehicles/Other Vehicles	47	58	62	63	63	66	59	63
PUBLIC WORKS								
Streets (sq. yards)	6,761,248	6,826,850	6,837,927	7,056,869	7,265,469	7,399,746	7,539,539	7,636,873
Curbs (lineal feet)	1,957,574	1,997,728	1,957,574	2,100,819	2,135,361	2,159,796	2,182,153	2,241,246
Sidewalks (sq. feet)	9,830,923	10,015,638	10,232,017	10,599,017	12,699,836	12,824,406	13,345,978	13,588,598
Storm Sewer (lineal feet)	153,275	153,275	157,826	162,158	168,148	172,360	179,388	179,888
Sumps	5,160	5,307	5,307	5,385	5,496	5,524	4,183	4,209
Signs	54,901	53,768	56,635	57,502	58,369	59,236	60,103	60,970
Vehicles	98	107	161	163	165	163	123	123
Buildings	7	4	4	4	4	4	5	5
PUBLIC HEALTH ACTIVITIES								
Cemetery & Buildings	7	7	7	7	7	7	7	7
Vehicles/Tractors/Trucks/Mowers	17	16	14	14	15	17	18	18
CULTURE AND RECREATION								
Parks	46	51	67	68	69	70	70	70
Trails	18	20	22					
Commuter	N/A	N/A	N/A	22	22	23	23	23
Recreational	N/A	N/A	N/A	55	55	56	56	56
Park Shelter/Band Shells/Pavilions	10	10	10	12	15	17	18	18
Buildings	20	23	23	23	23	23	23	23
Vehicles (Including trailers)	57	55	58	59	59	59	108	112
HOUSING & COMMUNITY DEVELOPMENT								
Vehicles	10	10	1	1	1	1	1	1
Buildings	2	2	-	-	-	-	-	-

Capital Asset Statistics by Function information prior to 2006 is not readily available in this format.

Source: City of Missoula Fixed Asset Accounting Module
Source: Various City of Missoula Departments

**CITY OF MISSOULA, MONTANA
SPECIAL ASSESSMENTS BILLED AND COLLECTED
Last Ten Fiscal Years**

Fiscal Year	Assessments Billed	Current Assessments Paid	Percent Collected	Delinquent Assessments Paid	Total Assessments Paid	Penalty and Interest Paid
2005	\$ 2,241,307	\$ 2,132,336	95.14%	\$ 425,988	\$ 2,558,324	\$ 16,314
2006	2,748,200	2,638,272	96.00%	246,280	2,884,552	10,996
2007	2,793,604	3,695,269	132.28%	106,930	3,802,199	11,629
2008	2,802,979	2,690,299	95.98%	107,817	2,798,116	11,653
2009	2,759,874	2,666,875	96.63%	109,340	2,776,215	11,539
2010	2,788,949	2,796,909	100.29%	136,607	2,933,516	14,999
2011	2,979,149	2,818,935	94.62%	159,941	2,978,876	18,139
2012	2,806,770	2,760,131	98.34%	160,377	2,920,508	16,070
2013	2,565,463	2,549,864	99.39%	51,388	2,601,252	8,058
2014	2,468,350	2,464,285	99.84%	19,211	2,483,496	11,121

Note: Property tax levies are set in August at the time the City budget is approved and billed November 1 by the County. Half of the taxes are due by November 30 and the other half by May 31. After those dates, the bills are delinquent (and a lien is placed on the property). The interest charged on delinquent taxes is one percent per month, with a two percent penalty.

Source: City of Missoula

**CITY OF MISSOULA, MONTANA
SPECIAL IMPROVEMENT DISTRICT 512, 521 AND 522
REQUIRED CONTINUING DISCLOSURE**

Fiscal Year	Combined Market Value of All Districts	Average Ratio of Market Value to Assessments of Individual Parcels	Highest Ratio of Market Value to Assessments of Individual Parcels	Lowest Ratio of Market Value to Assessments of Individual Parcels	Median Ratio of Market Value to Assessments of Individual Parcels
2005	\$ 166,871,500	\$ 95.60	\$ 2,692.30	\$ 2.07	\$ 117.52
2006	158,701,080	757.82	10,797.00	5.82	221.17
2007	191,613,295	1,219.98	13,841.43	6.35	221.37
2008	211,405,977	317.09	4,977.27	5.04	141.94
2009	234,349,048	954.97	6,111.87	20.47	160.49
2010	236,039,170	1,071.95	30,710.27	22.07	247.40
2011	215,320,296	1,296.29	51,474.37	40.46	823.26
2012	296,665,021	1,601.54	60,391.92	47.21	957.42
2013	343,465,684	43.42	43.42	43.42	43.42
2014	212,236,360	6,153.16	233,364.95	81.73	3,711.41

Source: City of Missoula and Missoula County Assessor's Office

STATISTICAL SECTION

CITY OF MISSOULA, MONTANA SPECIAL IMPROVEMENT DISTRICTS Current as of June 30, 2014

SID Number	Combined Market Value of All Districts	Average Ratio of Market Value to Assessments of Individual Parcels	Highest Ratio of Market Value to Assessments of Individual Parcels	Lowest Ratio of Market Value to Assessments of Individual Parcels	Median Ratio of Market Value to Assessments of Individual Parcels
FY11 Total ^	\$ 2,698,949,941	\$ 1,042.61	\$ 42,350.68	\$ 0.03	\$ 341.14
FY12 Total ^	3,105,150,944	893.51	26,719.49	1.76	429.81
FY13 Total ^	3,365,098,815	352.35	40,261.28	4.87	110.58
0508	3,429,200	43.42	43.42	43.42	43.42
0510	27,864,250	82.74	683.90	9.83	52.43
0511	14,896,547	94.26	632.06	21.03	43.37
512/521/522	212,236,360	6,153.16	233,364.95	81.73	3,711.41
0520	60,652,623	573.83	5,785.64	61.15	442.92
0524	408,080,150	2,061.21	78,667.03	7.30	1,330.71
0525	14,862,721	551.23	1,588.26	188.30	436.42
0526	58,740,901	552.31	2,722.95	18.65	423.08
0532	33,832,020	959.53	2,993.99	222.83	946.95
0533	5,998,241	595.29	2,815.58	275.52	385.18
0534	6,819,236	427.76	694.68	151.71	426.16
0535	30,304,619	6,806.27	48,218.87	2,989.56	6,322.59
0536	12,187,630	420.55	945.23	14.64	410.14
0539	3,945,442	2,443.15	5,575.68	1,362.51	2,210.96
0540	55,911,670	589.02	956.83	13.91	581.68
0541	273,844,716	5,043.30	32,911.90	0.22	4,569.37
0543	43,864,747	4,761.13	8,703.73	1,942.98	4,534.13
0544	47,422,631	318.30	1,001.94	14.28	318.33
0545	7,187,036	3,674.35	8,366.88	1,242.04	3,500.87
0546	6,236,720	3,953.68	5,271.65	2,883.32	39,007.54
CS08	14,539,151	676.78	4,369.82	47.41	520.46
CS09	14,453,869	287.99	1,138.99	38.27	229.95
CS10	17,683,338	330.52	5,029.61	24.62	178.40
CS12	32,099,642	1,732.38	20,053.80	82.53	763.11
CS13	44,728,786	5,243.99	59,880.70	13.69	2,109.95
CS343	7,945,343	967.29	5,357.45	98.95	1,169.87
CS344	7,225,871	342.60	1,483.66	52.72	253.41
CS345	13,940,976	437.70	1,332.63	28.13	393.40
CS346	16,351,688	272.56	1,004.17	41.75	173.33
FY14 Total ^	\$ 1,497,286,124	\$ 1,737.80	\$ 233,364.95	\$ 0.22	\$ 442.92

Source: City of Missoula and Missoula County Assessor's Office

^ First year to disclose information for all City SID's is FY 2011

CITY OF MISSOULA, MONTANA
MISSOULA PARKING COMMISSION RATES AND FEES
Last Ten Fiscal Years

Fiscal Year	On-Street Hourly Parking	Garage Hourly Parking	Parking Garage Lease Space Range	Off-Street Lease Space Range	Average Off-Street and Garage Lease Rate
2005	\$ 0.50	\$ 0.25	\$ 55.00 TO \$ 65.00	\$ 30.00 TO \$ 50.00	\$ 44.00
2006	0.50	0.25	55.00 TO 65.00	30.00 TO 50.00	44.00
2007	0.50	0.25	55.00 TO 65.00	30.00 TO 50.00	45.00
2008	0.50	0.25	55.00 TO 65.00	30.00 TO 50.00	45.00
2009	0.50	0.25	55.00 TO 65.00	30.00 TO 50.00	45.00
2010	0.50	0.25	55.00 TO 65.00	30.00 TO 50.00	45.00
2011	0.50	1.00	65.00 TO 75.00	35.00 TO 55.00	49.00
2012	0.50	1.00	65.00 TO 75.00	30.00 TO 55.00	51.00
2013	0.50	1.00	65.00 TO 75.00	30.00 TO 55.00	51.00
2014	0.50	1.00	65.00 TO 75.00	30.00 TO 55.00	53.00

Source: Missoula Parking Commission

STATISTICAL SECTION

CITY OF MISSOULA, MONTANA MISSOULA PARKING COMMISSION OPERATIONS AND FACILITIES Last Ten Fiscal Years

Fiscal Year	Parking Meters	Leased Parking Spaces	Parking Lots Throughout Downtown Missoula	Leased Parking Garage Spaces	University District Parking Permits	Percentage of Parking Ticket Revenue	Percentage of Parking Meter Revenue	Percentage of Garage Parking Revenue	Percentage of Leased Parking Revenue other than Parking Garage	Percentage of Other Revenue
2005	1,161	816	13	257	1,145	17%	36%	20%	23%	3%
2006	1,075	801	13	257	1,124	20%	34%	14%	28%	5%
2007	1,075	801	13	257	1,124	20%	34%	14%	27%	4%
2008	1,075	801	13	257	1,592	18%	31%	16%	21%	14%
2009	1,129	800	12	257	1,011	19%	35%	16%	21%	10%
2010	1,061	800	12	257	1,166	18%	37%	18%	23%	4%
2011	1,061	800	12	257	1,198	18%	37%	18%	23%	4%
2012	1,015	855	12	257	1,012	17%	38%	14%	29%	3%
2013	1,015	890	12	460	1,025	16%	34%	16%	32%	1%
2014	1,015	1,133	12	522	870	14%	33%	19%	31%	3%

Source: Missoula Parking Commission

**CITY OF MISSOULA, MONTANA
COMPONENT UNIT REVENUE BOND COVERAGE
PARKING COMMISSION REVENUE BONDS**

FISCAL YEAR	OPERATING REVENUES	SID 470 REVENUES	OPERATING EXPENSES (A)	NET AVAILABLE FOR DEBT SERVICE	PRINCIPAL PAID	INTEREST PAID	TOTAL DEBT SERVICE	COVERAGE (B)
2004	\$1,407,378	\$ 2,838	\$ 964,510	\$ 445,706	\$ 85,000	\$ 74,950	\$ 159,950	279%
2005	\$1,369,511	\$ 1,450	\$ 864,335	\$ 506,626	\$ 90,000	\$ 70,990	\$ 160,990	315%
2006	1,474,651	-	855,051	619,600	95,000	66,230	161,230	384%
2007	1,391,368	-	903,019	488,349	100,000	63,237	163,237	299%
2008	1,429,972	-	1,008,437	421,535	105,000	58,345	163,345	258%
2009	1,448,179	-	1,013,313	434,866	110,000	53,162	163,162	267%
2010	1,415,863	-	1,026,254	389,609	115,000	46,778	161,778	241%
2011	1,443,085	-	947,789	495,296	120,000	(86,268)	33,732	1468%
2012	1,739,234	-	876,485	862,749	220,000	384,813	604,813	143%
2013	1,838,073	-	958,094	879,979	210,000	302,292	512,292	172%
2014 *	1,743,334	-	962,224	781,110	220,000	298,267	518,267	151%

* Debt Service Coverage Calculation - 2014	
	FY 2014
Revenues	
Total Operating Revenue	\$ 1,597,147
MRA Pledge	146,187
Total Revenues Pledged	1,743,334
Expenses	
Operating Expenses	(1,371,138)
Add back Depreciation ^	408,914
Add back PILOT-Admin Chg	
Total Operating Expenses	(962,224)
Revenues Available for Debt Service	<u>\$ 781,110</u>
Debt Service	
Principal	\$ 220,000
Interest	537,036
Less: Federal Credit	(238,769)
Net Debt Service	<u>\$ 518,267</u>
Coverage	151%

(A) Does not include depreciation or bond interest.

(B) Net available divided by debt service.

Source: City of Missoula Annual Reports

**CITY OF MISSOULA, MONTANA
COMPONENT UNIT MISSOULA REDEVELOPMENT AGENCY
HISTORICAL VALUE OF TAX INCREMENT DISTRICTS
For the Last Ten Fiscal Years**

Urban Renewal District II

Fiscal Year	Personal Attached Taxable Value	Personal Property (Unattached) Taxable Value	Total Taxable Value
2005	\$ 2,377,104	\$ 190,777	\$ 2,567,881
2006	2,444,439	197,268	2,641,707
2007	2,660,473	311,261	2,971,734
2008	2,718,817	342,487	3,061,304
2009	3,162,083	358,422	3,520,505
2010	3,302,146	318,269	3,620,415
2011	3,415,110	336,897	3,752,007
2012	3,371,473	309,233	3,680,706
2013	3,379,411	262,535	3,641,946

Urban Renewal District III

Fiscal Year	Real Property & Personal Attached Taxable Value	Personal Property (Unattached) Taxable Value	Total Taxable Value
2005	\$ 6,809,431	\$ 621,899	\$ 7,431,330
2006	6,991,926	677,495	7,669,421
2007	7,111,962	586,632	7,698,594
2008	7,306,424	406,379	7,712,803
2009	8,468,861	468,589	8,937,450
2010	9,027,375	514,481	9,541,856
2011	8,939,540	568,590	9,508,130
2012	9,118,547	552,532	9,671,079
2013	8,797,853	381,195	9,179,048

Front Street URD

Fiscal Year	Real Property & Personal Attached Taxable Value	Personal Property (Unattached) Taxable Value	Total Taxable Value
2009 *	\$ 1,362,450	\$ 51,225	\$ 1,413,675
2010	1,571,488	50,604	1,622,092
2011	2,105,933	124,059	2,229,992
2012	1,908,040	121,154	2,029,194
2013	1,903,163	83,983	1,987,146

Riverfront Triangle URD

Fiscal Year	Real Property & Personal Attached Taxable Value	Personal Property (Unattached) Taxable Value	Total Taxable Value
2010 ^	\$ 1,571,488	\$ -	\$ 1,571,488
2011	153,701	36,236	189,937
2012	132,286	36,579	168,865
2013	112,584	279	112,863

* First year data available as district was created in FY 2009

^ First year data available as district was created in FY 2010

Source: City of Missoula and Missoula County Assessor's Office

**CITY OF MISSOULA, MONTANA
COMPONENT UNIT MISSOULA REDEVELOPMENT AGENCY
TAXABLE VALUE OF DISTRICTS COMPARED TO CITY
For the Last Ten Fiscal Years**

Urban Renewal District II				
Fiscal Year	Total City Taxable Value	Total Taxable Value Within Tax Increment District	Incremental Taxable Value Within Tax Increment District	Tax Increment as Percentage of City's Taxable Value
2006	\$ 93,533,579	\$ 2,641,707	\$ 781,884	0.8%
2007	99,332,558	2,971,734	1,111,911	1.1%
2008	103,000,436	3,061,304	1,201,481	1.2%
2009	106,334,891	3,520,504	1,392,741	1.3%
2010	107,159,214	3,620,415	1,760,592	1.6%
2011	111,474,037	3,752,007	1,892,184	1.7%
2012	112,993,774	3,680,706	1,820,883	1.6%
2013	112,697,955	3,641,946	1,782,123	1.6%
2014	109,336,360	3,686,503	1,859,823	1.7%
2015	112,624,034	3,802,603	1,942,780	1.7%

Urban Renewal District III				
Fiscal Year	Total City Taxable Value	Total Taxable Value Within Tax Increment District	Incremental Taxable Value Within Tax Increment District	Tax Increment as Percentage of City's Taxable Value
2006	\$ 93,533,579	\$ 7,669,421	\$ 665,075	0.7%
2007	99,332,558	7,698,594	694,248	0.7%
2008	103,000,436	7,712,803	708,457	0.7%
2009	106,334,891	8,937,450	1,933,104	1.8%
2010	107,159,214	9,541,856	2,537,510	2.4%
2011	111,474,037	9,508,130	2,503,784	2.2%
2012	112,993,774	9,671,079	2,666,733	2.4%
2013	112,697,955	9,179,048	2,174,702	1.9%
2014	109,336,360	9,358,441	2,355,095	2.2%
2015	112,624,034	8,470,753	1,466,407	1.3%

Front Street URD				
Fiscal Year	Total City Taxable Value	Total Taxable Value Within Tax Increment District	Incremental Taxable Value Within Tax Increment District	Tax Increment as Percentage of City's Taxable Value
2009 *	\$ 106,334,891	\$ 1,413,675	\$ 640	0.0%
2010	107,159,214	1,622,092	209,057	0.2%
2011	111,474,037	2,229,992	816,957	0.7%
2012	112,993,774	2,029,197	616,159	0.5%
2013	112,697,955	1,987,146	574,111	0.5%
2014	109,336,360	1,964,237	551,202	0.5%
2015	112,624,034	1,950,387	537,352	0.5%

Riverfront Triangle				
Fiscal Year	Total City Taxable Value	Total Taxable Value Within Tax Increment District	Incremental Taxable Value Within Tax Increment District	Tax Increment as Percentage of City's Taxable Value
2010 ^	\$ 104,408,018	\$ 133,871	\$ -	0.0%
2011	111,474,037	189,937	32,079	0.0%
2012	112,993,774	168,865	11,007	0.0%
2013	112,697,955	112,863	-	0.0%
2014	109,336,360	116,994	-	0.0%
2015	112,624,034	120,870	-	0.0%

* First year data available as district was created in FY 2009

^ First year data available as district was created in FY 2010

Source: City of Missoula and Missoula County Assessor's Office

STATISTICAL SECTION

CITY OF MISSOULA, MONTANA COMPONENT UNIT MISSOULA REDEVELOPMENT AGENCY TRENDS IN PROPERTY VALUATION IN CITY For the Last Ten Fiscal Years

Fiscal Year	City Appraised Value	City Taxable Value (includes district)	Incremental Taxable Value District I	Incremental Taxable Value District II	Incremental Taxable Value District III	Incremental Taxable Value Front Street URD	Incremental Taxable Value Riverfront Triangle URD	Net Taxable Value (excluding districts)
2006	\$ 2,901,638,641	\$ 94,980,538	not applicable	\$ 781,884	\$ 665,075	\$ -	\$ -	\$ 93,533,579
2007	3,195,587,513	101,138,717	not applicable	1,111,911	694,248	-	-	99,332,558
2008	3,369,424,008	103,000,436	not applicable	1,201,481	708,457	-	-	101,090,498
2009	3,412,313,560	106,334,891	not applicable	1,392,741	1,933,104	640	-	103,008,406
2010	3,684,720,974	107,159,214	not applicable	1,760,592	2,537,510	209,057	-	102,652,055
2011	3,965,146,053	111,474,037	not applicable	1,892,184	2,503,784	816,957	32,079	106,229,033
2012	4,140,685,284	112,993,774	not applicable	1,820,883	2,666,733	616,159	11,007	107,878,992
2013	4,110,699,383	112,697,955	not applicable	1,782,123	2,174,702	574,111	-	108,167,019
2014	4,305,020,382	114,068,797	not applicable	1,826,140	2,355,095	551,202	-	109,336,360
2015	4,406,017,003	112,624,034	not applicable	1,942,780	1,466,407	537,352	-	108,677,495

Source: City of Missoula and Missoula County Assessor's Office

**CITY OF MISSOULA, MONTANA
MISSOULA REDEVELOPMENT AGENCY
COMPONENT UNIT TAX INCREMENT REVENUE BOND COVERAGE
URD II: MILLSITE \$3.6M BONDS**

FISCAL YEAR	PROJECTED PLEDGED TAX INCREMENT	MAXIMUM PROJECTED DEBT SERVICE	COVERAGE
2007			
With State Entitlement	\$ 1,033,421	\$ 250,500	413%
Without State Entitlement	749,799	250,500	299%
2008			
With State Entitlement	1,129,477	250,500	451%
Without State Entitlement	845,855	250,500	338%
2009			
With State Entitlement	1,302,970	250,400	520%
Without State Entitlement	1,019,348	250,400	407%
2010			
With State Entitlement	1,369,859	250,400	547%
Without State Entitlement	1,113,237	250,400	445%
2011			
With State Entitlement	1,493,995	250,400	597%
Without State Entitlement	1,210,373	250,400	483%
2012			
With State Entitlement	1,429,000 A	250,400 B	571%
Without State Entitlement	1,173,740	250,400	469%
2013			
With State Entitlement	1,474,944 C	250,400	589%
Without State Entitlement	1,157,656	250,400	462%
2014			
With State Entitlement	1,522,881	676,428 D	225%
Without State Entitlement	1,208,093	676,428	179%
2015			
With State Entitlement	1,668,283 E	676,428	247%
Without State Entitlement	1,225,692	676,428	181%

A State Entitlement amount reduced by 10% to \$255,260 by 2011 Legislative action

B Civic Stadium Note issued February 2012 is subordinate to the Series 2006 bonds so not included in Max. Projected DS. Civic Stadium DS is \$500K Max Annual through FY15.

C Personal Property Tax Reduction Reimbursement approved by 2011 Legislature under SB372. Annual Reimbursement is \$62,028.

D

Series 2013 \$5.75M Bond issued March 2013 on parity with Series 2006 Bond. Max. Annual DS \$426,028

E Personal Property Tax Reduction Reimbursement approved by 2013 Legislature under SB96. Annual Reimbursement is \$125,303.

Source: City of Missoula Annual Reports

**CITY OF MISSOULA, MONTANA
PROPERTY TAX LEVIES IN THE URBAN RENEWAL DISTRICT II
Last Ten Fiscal Years**

	FY '06	FY '07	FY '08	FY '09	FY '10	FY '11	FY '12	FY '13	FY '14	FY '15
Taxing Authority	2005/06	2006/07	2007/08	2008/09	2009/10	2010/11	2011/12	2012/13	2013/14	2014/15
State University Mill Levy	6.00	6.00	6.00	6.00	6.00	6.00	6.00	6.00	6.00	6.00
State Statewide School Equalization	30.20	25.91	25.39	25.44	26.92	26.60	26.28	26.55	26.15	19.23
General Countywide School Levy	77.20	67.53	66.04	67.17	54.71	53.28	51.18	51.46	52.68	50.80
Missoula County	97.47	86.56	86.44	89.27	72.66	72.00	72.24	74.51	75.71	76.98
Missoula Highschool District	62.96	53.25	48.91	50.33	39.98	38.44	38.76	36.94	36.36	34.99
City of Missoula	148.27	132.60	134.71	141.49	116.33	116.17	118.27	123.75	122.64	118.10
Urban Transportation District	9.35	9.01	9.28	9.45	8.52	8.47	8.97	10.02	10.60	16.47
Increment 1-1C *	175.00	256.84	266.50	270.27	353.75	359.55	372.64	369.31	387.47	419.86
Subtotal	606.45	637.70	643.27	659.42	678.87	680.51	694.34	698.54	717.61	742.43

School District 1-1C	113.74	97.32	92.32	89.20	74.65	72.88	73.61	72.88	75.01	72.29
Total leviesfor property in the District lying within School District 1-1C	720.19	735.02	735.59	748.62	753.52	753.39	767.95	771.42	792.62	814.72

	FY '06	FY '07	FY '08	FY '09	FY '10	FY '11	FY '12	FY '13	FY '14	FY '15
Taxing Authority	2005/06	2006/07	2007/08	2008/09	2009/10	2010/11	2011/12	2012/13	2013/14	2014/15
State University Mill Levy	6.00	6.00	6.00	6.00	6.00	6.00	6.00	6.00	6.00	6.00
State Statewide School Equalization	21.13	21.46	20.06	18.77	24.90	22.73	25.87	25.85	26.37	21.37
General Countywide School Levy	24.02	55.95	52.19	49.56	49.44	43.27	50.14	49.71	53.27	56.44
Missoula County	68.21	71.71	68.31	65.86	65.66	58.47	70.77	71.98	76.55	85.54
Missoula Highschool District	44.06	44.11	38.65	37.13	36.13	31.21	37.97	35.69	36.76	38.88
City of Missoula	103.75	109.86	106.45	104.38	105.12	94.34	115.86	119.55	124.01	131.23
Urban Transportation District	6.54	7.46	7.33	6.97	7.70	6.88	8.79	9.68	10.72	18.31
Increment 4-1C *	328.52	335.27	355.00	402.98	398.69	441.03	384.35	384.05	382.13	378.47
Subtotal	602.23	651.82	653.99	691.65	693.64	703.93	699.75	702.51	715.81	736.24

School District 4-1C	70.20	77.67	64.27	73.61	74.27	66.18	75.98	71.89	74.84	82.45
Total leviesfor property in the District lying within School District	672.43	729.49	718.26	765.26	767.91	770.11	775.73	774.40	790.65	818.69

* Note: Tax Increment districts are not taxing authorities and do not levy taxes, i.e. levy mills. Total incremental taxable value can be viewed as a percentage of total taxable value in a district, from information provided by the Montana Department of Revenue. For purposes of disclosure, this report shows that same percentage broken down

MISSOULA COUNTY
Urban Renewal District II - Top 10 Taxpayers
Tax Year 2014 (FY15)

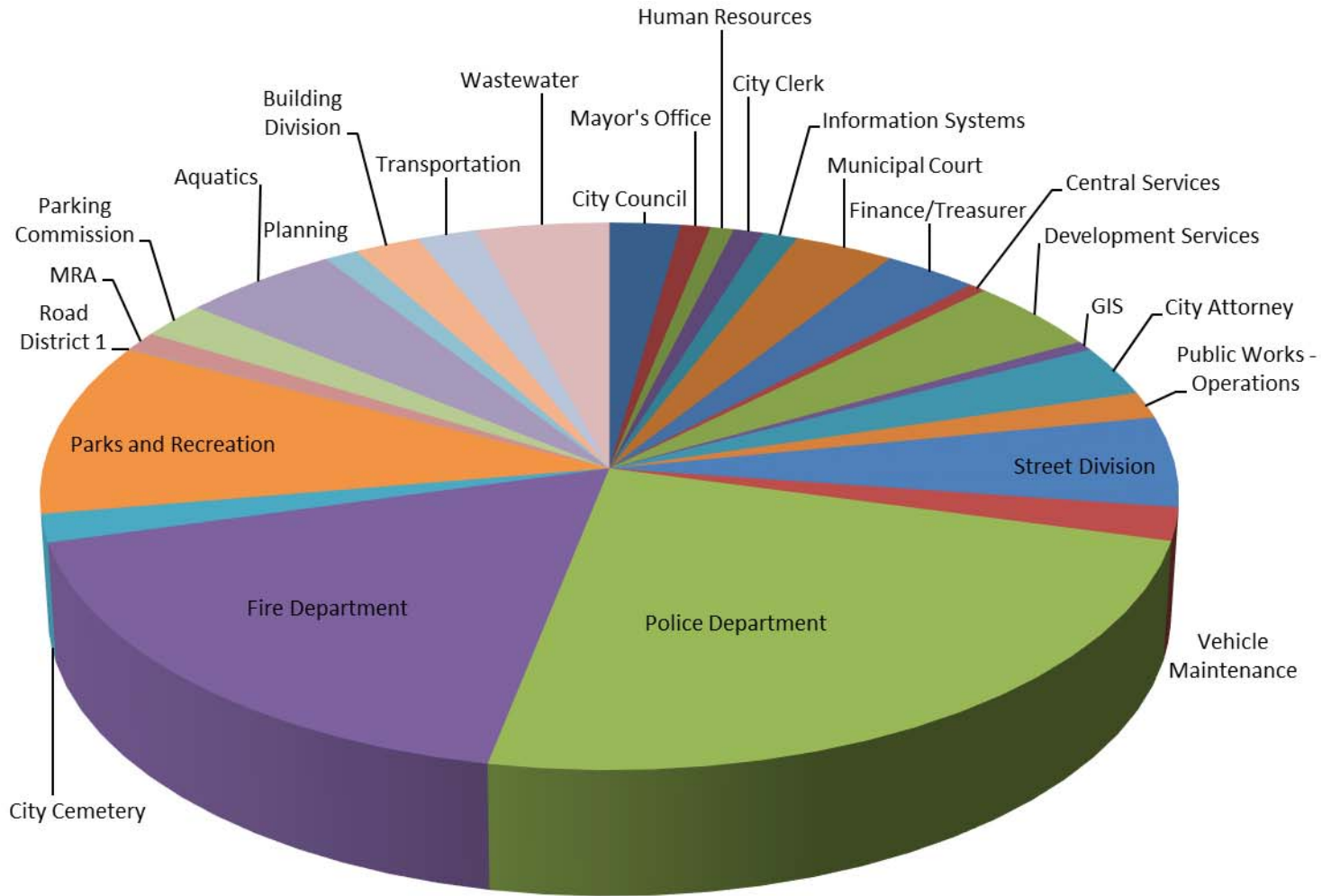
	Taxpayer	Type of Business	2014 Total Tax	2014 Market Value	2014 Taxable Value
1	Safeway Inc.	Grocery Store	\$ 179,705	\$ 8,632,305	\$ 212,770 *
2	Montana Apartment Company	Residential	133,975	6,471,881	159,855
3	Mountain Water Co	Water Company	133,201	9,503,064	159,297
4	Good Food Store	Commercial Grocery	112,207	5,776,743	131,664
5	Nutritional Laboratories	Food Supplement Manufacturer	108,929	6,049,889	118,782
6	Blackfoot Telephone	Coop Communications	97,231	3,880,658	116,420
7	Missoula Electric Coop	Coop Electric Utility	86,276	3,479,108	104,374
8	Like-Nu Auto Services	Automotive Repair	60,087	2,890,248	71,389
9	Ashlyn Place	Residential	55,647	2,689,220	66,424
10	Norman B. Carey	Bowling Alley, Undeveloped Land	55,304	2,626,225	64,868
Total			<u>\$ 1,022,561</u>	<u>\$ 51,999,341</u>	<u>\$ 1,205,843</u>

* Combines two tax IDs listed seperately for Safeway and Nutritional Labs on County report.

**CITY OF MISSOULA
SCHEDULE OF FTE TRENDS
FY 2011 – 2015**

	2011	2012	2013	2014	2015
	# FTE	# FTE	# FTE	# FTE	Adopted
City Departments					
City Council	12.00	12.00	12.00	12.00	12.00
Mayor's Office	5.00	5.00	5.00	5.00	5.00
Human Resources	4.00	4.00	4.00	5.00	4.00
City Clerk	3.50	4.00	4.00	4.00	5.00
Information Systems	6.00	6.00	6.00	6.00	6.00
Municipal Court	13.75	13.75	16.75	16.85	16.85
Finance/Treasurer	15.00	15.00	15.00	15.50	16.00
Central Services	0.00	0.00	0.00	1.50	3.00
Development Services	0.00	0.00	33.71	35.21	23.10
GIS	0.00	0.00	0.00	3.00	3.00
City Attorney	12.75	14.00	15.00	16.00	16.00
Public Works - Operations	29.82	27.52	11.42	8.42	8.42
Street Division	25.38	28.54	28.79	28.79	28.79
Vehicle Maintenance	10.50	10.50	10.50	11.50	10.50
Police Department	117.00	117.00	122.00	126.00	129.00
Fire Department	95.00	95.00	95.00	95.00	95.00
City Cemetery	8.92	8.92	8.92	8.92	8.92
Parks and Recreation	52.51	54.42	57.74	55.80	55.34
Total General	411.13	415.65	445.83	454.49	445.92
General Fund % Increase	-3.62%	1.10%	7.26%	1.94%	-1.89%
Special Revenue Funds					
Planning	-	-	-	-	5.75
Building Division	9.00	9.00	9.00	10.99	10.99
Road District 1	3.16	-	0.25	0.25	0.25
Parks District 1	3.23	-	-	-	-
Transportation	-	-	-	-	10.15
Total Special District	15.39	9.00	9.25	11.24	27.14
Enterprise Funds					
Aquatics	30.81	26.81	26.81	26.81	26.81
MRA	6.00	6.00	6.00	6.00	6.00
Wastewater	21.50	21.50	21.50	22.50	22.50
Parking Commission	11.33	11.33	11.50	11.50	11.50
Total Enterprise	69.64	65.64	65.81	66.81	66.81
Non-General Fund % Increase	21.45%	-12.22%	0.56%	3.98%	20.37%
Total for City Departments	496.16	490.29	520.89	532.54	539.87

City FTE Count by Department - FY 2015



City FTE Count by Function - FY2015

