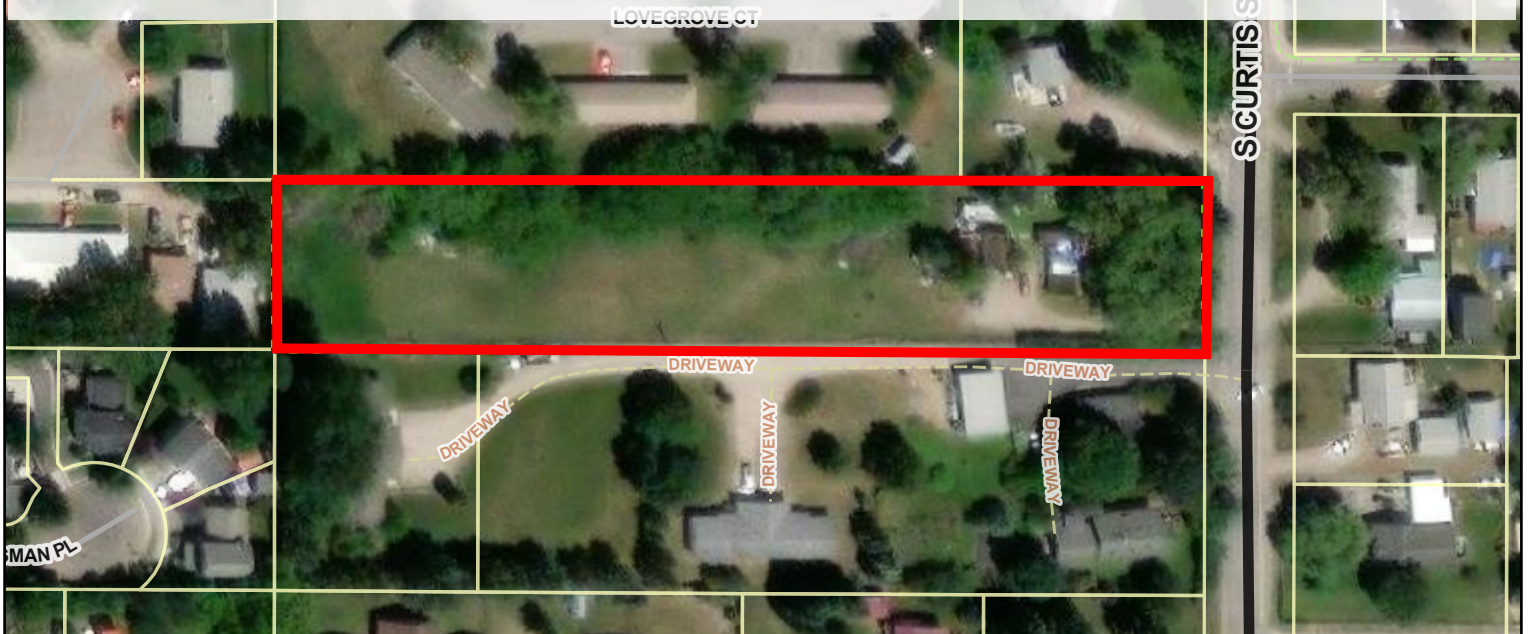


Wildlife Exhibit

The proposed subdivision property is situated amongst existing residential development on all sides which includes both motorized and non-motorized public infrastructure. The development is proposed to be a major subdivision intended for residential development. The Environmental Summary Report, managed by Montana Natural Heritage Programs data, provides species occurrences, ecological systems, biological reports of both plan and animal observations within a one mile buffer of the subject property. According to this report the property could be classified as a low intensity residential development that includes a mixture of constructed materials and vegetation. Impervious surfaces may account for 20-50% of total cover and may include paved roadways. Areas under the low intensity residential development classification most commonly include single-family housing units in rural and suburban areas.

The site is not known to have critical or key wildlife areas such as big game winter ranges, grizzly bear linkage corridors, waterfowl nesting areas, habitat for rare or endangered species, and wetlands and riparian resource areas per Montana Fish, Wildlife, and Park's maps and data.



Typical of a inner city residential area the property consists of birds, insects and small mammals and species found within this area are specifically listed below as provided within the Environmental Summary. The animal observations provided in include but are not limited to:

Bald Eagle, Great Blue Heron, Lewis Woodpecker, Pileated Woodpecker, Clark's Nutcracker, Grey-crowned Rosey-Finch, Evening Grosbeak, Cassin's Finch, Veery, Varied Thrush, Brown Creeper, Flammulated Owl, Flammulated Owl, Long-eared Myotis, Bat and Bat Roost, and Western Skink.



Map Center: X: -114.03293 - Y: 46.86979

The material displayed on this page is informational and should be used for reference only. No reliance should be placed thereon without verification by the user. Missoula County does not warrant that the information is either complete or accurate. No representation, warranties or covenants of any kind are made by Missoula County. Before acting on the information contained on this page the user should consult original documents.