

LEGEND

 FARMLAND OF LOCAL IMPORTANCE
Unit Name: Minesinger-Bigarm complex, 4 to 15 percent slopes

 FARMLAND OF STATEWIDE IMPORTANCE
Unit Name: Bigarm gravelly loam, 4 to 15 percent slopes

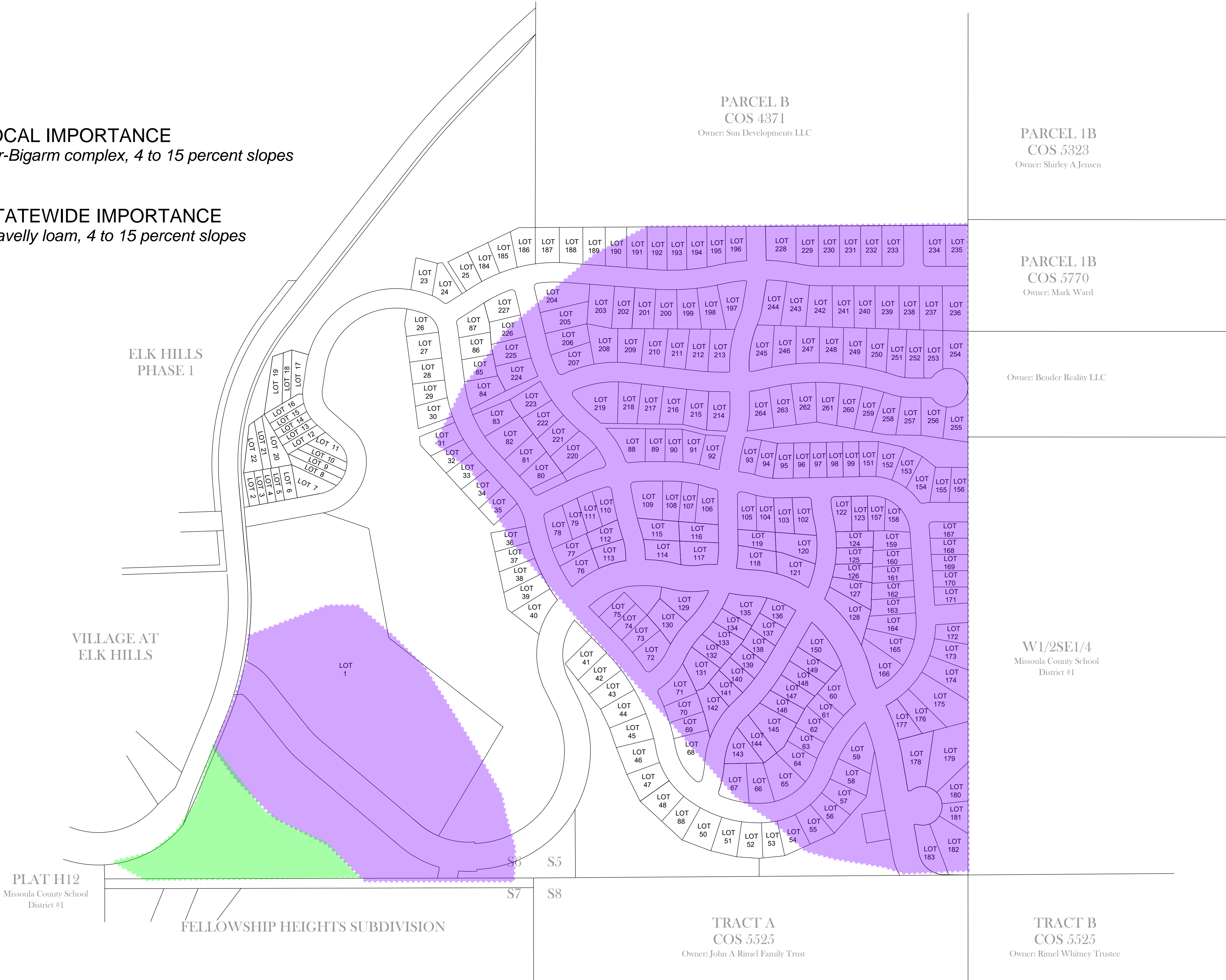


EXHIBIT K-1
IMPORTANT FARMLAND

Cushing
Terrell.

cushingterrell.com
800.757.9522

AWS
AIR WATER SOIL

MISSOULA, MONTANA
HILL VIEW

NOT FOR CONSTRUCTION - PRELIMINARY DESIGN

© 2022 | ALL RIGHTS RESERVED

EXHIBIT

1-27-2023
DRAWN BY | VERNON
CHECKED BY |
REVISIONS