

TAKIMA PARK STORMWATER TREATMENT

BIORETENTION BASIN - CONCEPTUAL SITE PLAN

SITE PLAN LEGEND

- 1

Tie-into Existing Stormwater Line
- 2

Pretreatment Cell and Outflow
- 3

Rockery - Water Energy Dissipation
- 4

Rock Weir - 3' Drop
- 5

Meandering Low-flow Water Channel
- 6

Opportunity for Trail Spur Along Berm
- 7

Future Curbside Sidewalk - 6' Wide
- 8

Culvert - Water Overflows to Swale
- 9

Meandering Discharge Swale from "Zone 3" to Pattee Creek
- Native Plantings - Consists of Upland, Riparian, & Emergent Vegetation
- Boulders / Rip-Rap
- S+

Existing Sanitary Sewer Line
- 00 -

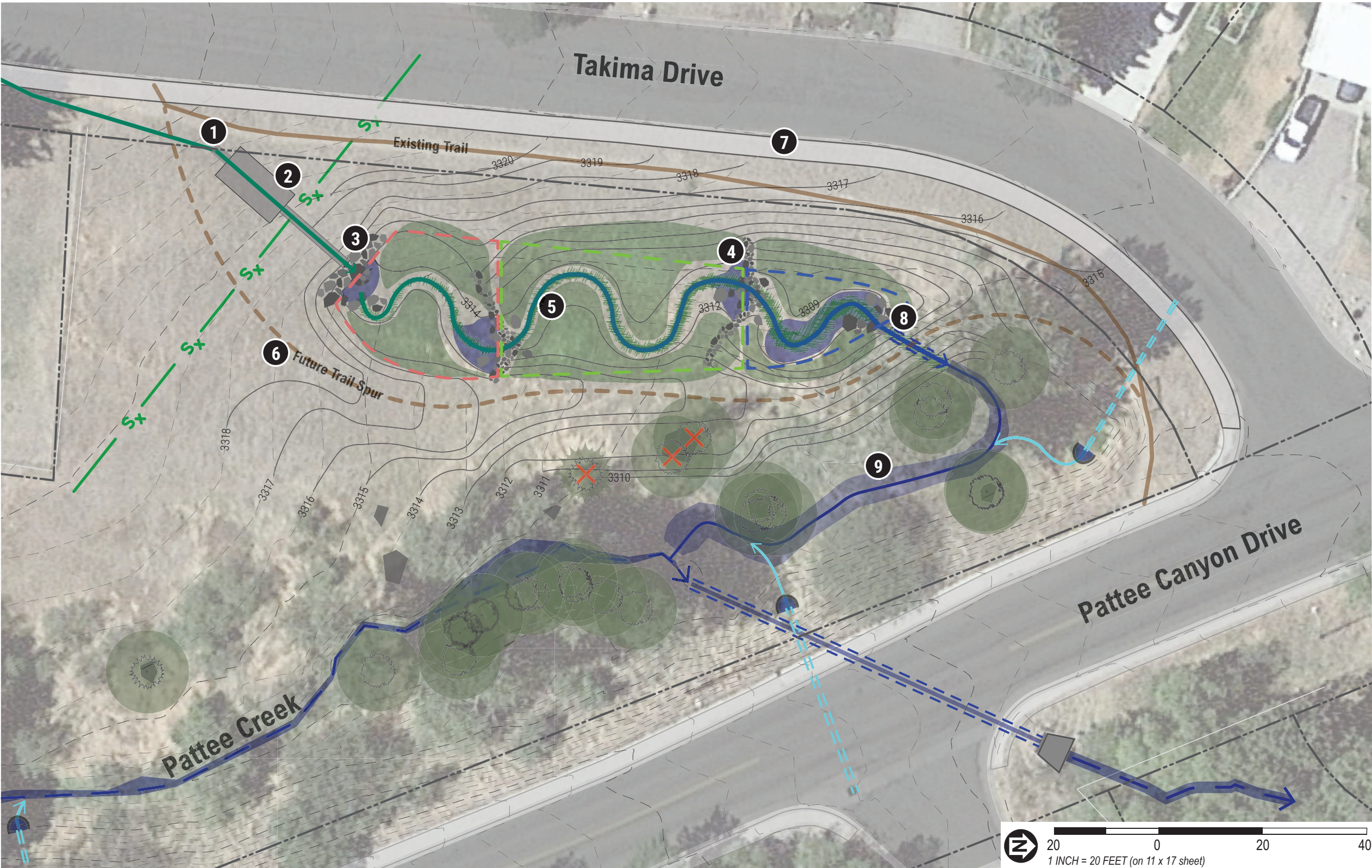
Existing Contours
- 00

Proposed Contours
- Flow of Stormwater to be Treated
- Minor Storm Drain Outfalls
- Micro-detention Pools at Outfalls
- X

Trees to be Removed

BIORETENTION ZONES

- Zone 1 - Partial Water Infiltration
- Zone 2 - Partial Water Infiltration
- Zone 3 - Occassional Standing Water



CONCEPTUAL DESIGN